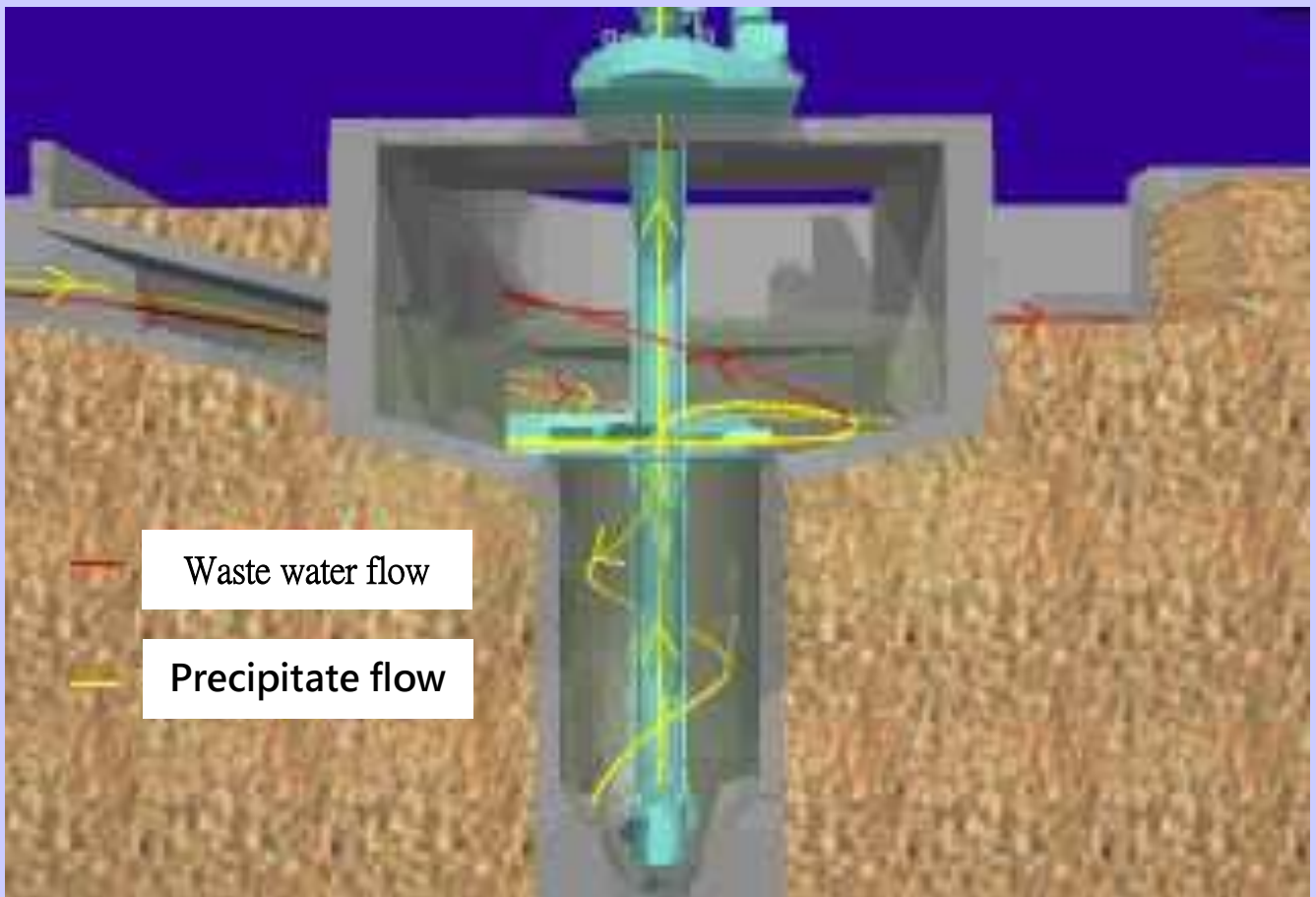




Vortex Grit Chamber



Create, Service, Quality, Win-Win

Vortex Grit Chamber



Principle

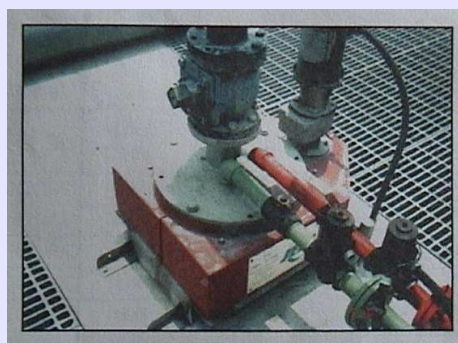
For effective removing the particulate matters of inflow, including small sands and grits, Vortex Grit Chamber system is setting an agitator in grit tank. This equipment will produce reflux vortex in water and separate the grits by its centrifugal force. Therefore when the waste water enters the tank by tangent path, it will produce the vortex. But when it is low speed of entrance flow, we

description

The grits are the main reason of damage of equipment for dealing the waste water. Beside the grits accumulation will also cause to the efficiency capacity smaller for each tank . And the grits even clog pipes to cause the increasing operating cost. Therefore, to effectively remove the hard grits and granular substances is the most important stage before dealing with waste water.



- Generally, this equipment is installed on the main-entrance of inflow.
- It is composed by a cone collecting chamber.
- It is for collecting and precipitating the grits and other granular substances.
- The rotary cutting speed of inflow will decide the quantity of precipitation.
- It is using gravity to precipitate, gather and remove the grits from bottom.
- The lighter organic suspended substances cannot subside quickly, and will flow to next processing unit



Characteristic

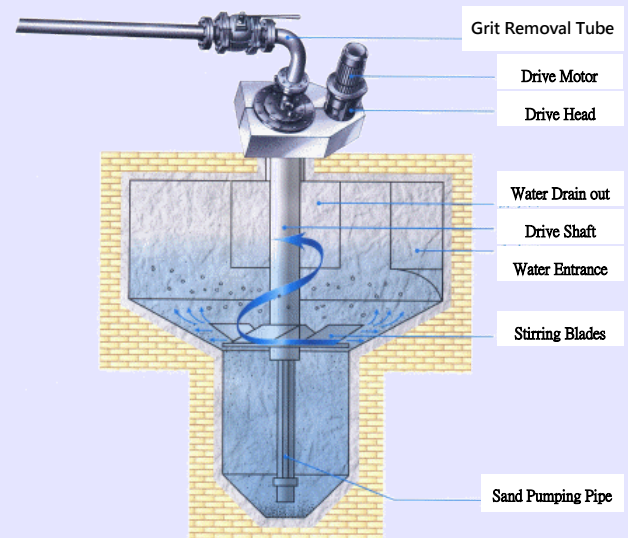
- ☆ Perfect ☆ Using small space – High efficiency of removal rate
- ☆ Simple mechanical structure – Easy to maintain
- ☆ Low consuming energy – Low operating cost
- ☆ Low pressure loss - Wide range of using
- ☆ Less parts depletion – Low damage



Rate of Removing Grit	
Grain Diameter (mm)	efficiency
≥ 0.3	95%
≥ 0.2	85%
≥ 0.1	65%

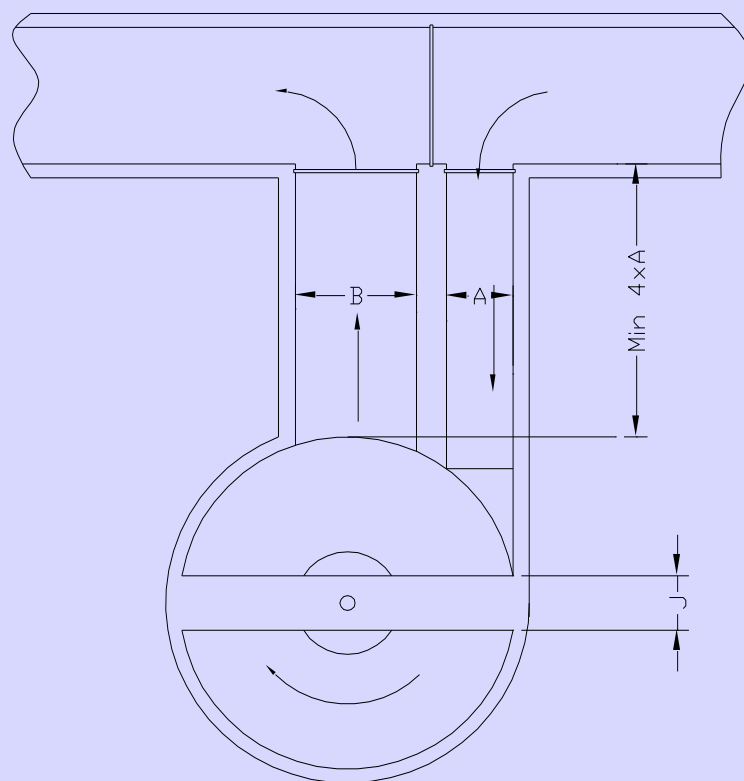
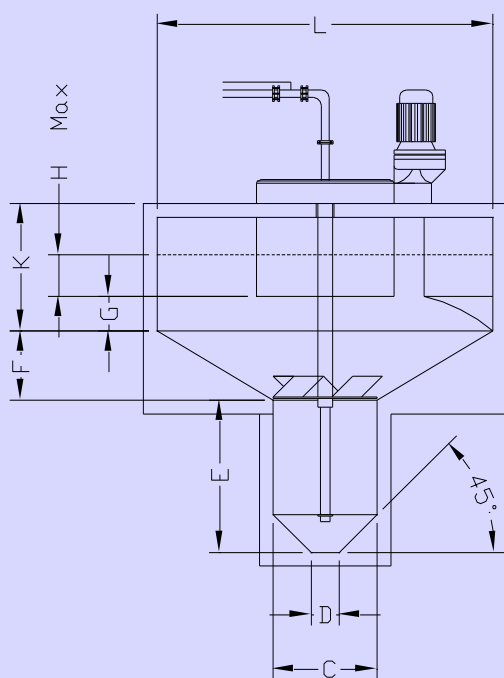
Compare effect

The traditional grit chamber needs bigger space and higher installing cost. And the working quality is not easy to control. So the removal rate is un-expected. In actual operation in the future, the problem of silt accumulation cannot be solved. That will spend more time and labors and increase more operation cost. The Vortex Grit Chamber system can solve all of the mentioned problems of traditional grit chamber by using simple mechanical principle. The Vortex Grit Chamber system also avoids the other troubles of operation and maintenance in the future.



Equipment Parts Description

Vortex Grit Chamber



Specifications

TYPE RM	Capacity (M ³)	A	B	C	D	E	F	G	H	J	K	L
180D	180	300	600	1000	305	1420	305	305	205	800	1100	1800
210D	400	370	740	1000	305	1420	305	305	305	800	1110	2100
240D	650	450	900	1000	305	1370	400	305	405	800	1155	2400
300D	1100	610	1220	1000	305	1550	455	305	455	800	1360	3000
360D	1900	760	1520	1500	405	1700	605	505	580	800	1460	3600
485D	3150	1000	2000	1500	405	2220	1010	505	605	800	1860	4850
545D	4700	1100	2200	1500	405	2220	1010	605	635	800	1870	5450
575D	6300	1220	2440	1500	455	2550	1320	750	705	800	1950	5750
605D	7800	1250	2500	1500	455	2550	1320	900	755	800	1980	6050

※ Different sizes can be make for different requirement. But we have the right to modify it.



CYUAN TAI INDUSTRY CO., LTD.
 No. 164-1, Jhongping St., Jhongshan District, Keelung City 203, TAIWAN, R. O. C
<http://www.cyuantai.com>

TEL:+886-2-24291528 FAX:+886-2-24226054

Eymail:cyuantai2008@gmail.com