



散氣管.盤(曝氣設備)

Fine Bubble Diffuser

曝氣盤系列產品

Envi-Bubble Disc Diffuser

The membrane fine bubble disc diffusers satisfy all your need of aeration.

Membrane Disc Diffuser

self cleaning & back flow prevention;
water stirring & corrosion resistance;
flexibility & durability.



Envi-Bubble Disc Diffuser

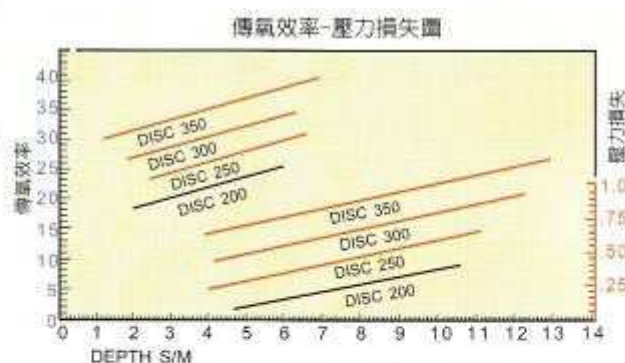
DISC-200, 250, 300, 350

結構 Structure .

- 襯部：採高級人造複合生化工程橡膠(EPDM-NEWPLAN)精練而成，可有效抑制曝氣膜的老化，延長使用壽命。
Membrane: Adopted the EPDM-NEWPLAN to melt. It can restrain the ageing effectively of the membrane, and protract the using life.
- 曝氣孔：採Λ型穿孔施作能有效防止污水逆流及曝氣時氣泡均小於0.3mm以下。
Spreading hole: Adopted the Λ shaped for perforating to prevent adverse of waste water effectively and the bubble would be less than 0.3mm during aeration.
- 本體部：採用NYLON+A.B.S. 強化塑膠成形，可有效防止變形。
Base: Adopted the NYLON+A.B.S. Produced by hard plastics. It could prevent it out of shape.

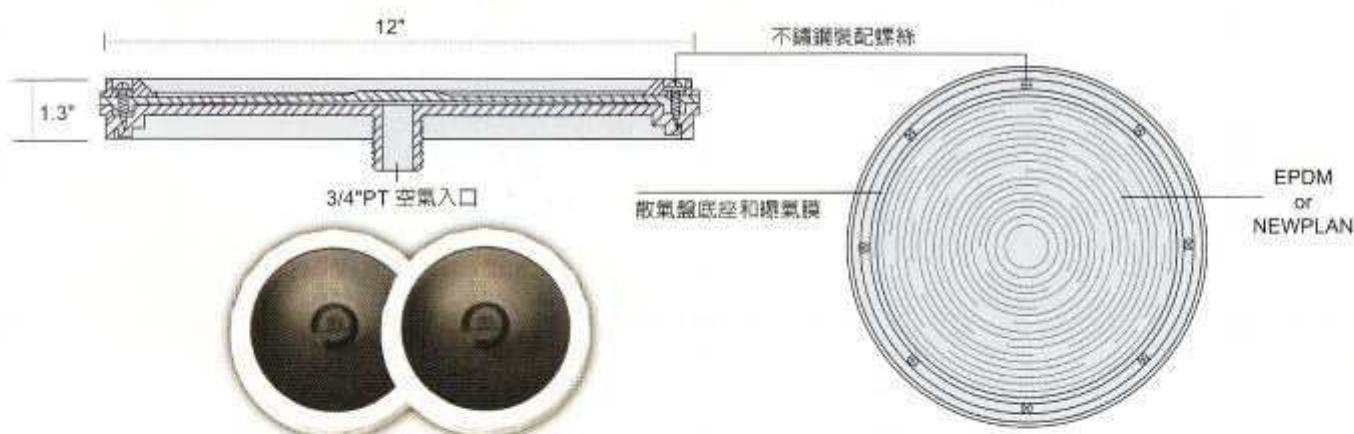
優點 Advantage .

- 超凡的傳氧效果
High oxygen transfer efficiency
- 壓力損失小
Low pressure loss
- 耐酸鹼
High resistance to corrosion
- 具自動清洗功能
Self cleaning operation
- 採雙膜片設計防止污水逆流
Back flow prevention
- 安裝容易
Easy installation
- 間歇操作性能強
Intermittent operation capability
- 曝氣均勻
Water-stirring effect
- 操作風量小
Low flow to operation



適用範圍 Suitable range .

- 污水處理氧化接觸池
Place of dealing with waste water
- 淨水活化
Active the clean water
- 湖泊、河川、提高溶氧
Promote the oxygen in lake and river
- 養殖池提高溶氧量
Promote the oxygen in lake and river
- 穩定MLSS
Stable the MLSS



規格表 Specifications

型號 Model Number	規格 Dimension	操作範圍 (L/min) Flow Range (LPM)	襯部材質 Membrane	本體部材 Base	固定部件 Hardware
Disc-200	8"x2.3"	20~100	EPDM-NEWPLAN	FIBER+A.B.S.	BOLTFIJD
Disc-250	10"x2.3"	20~150	EPDM-NEWPLAN	FIBER+A.B.S.	BOLTFIJD
Disc-300	12"x2.3"	20~280	EPDM-NEWPLAN	FIBER+A.B.S.	BOLTFIJD
Disc-350	13.5"x2.3"	20~310	EPDM-NEWPLAN	FIBER+A.B.S.	BOLTFIJD



曝氣管系列產品

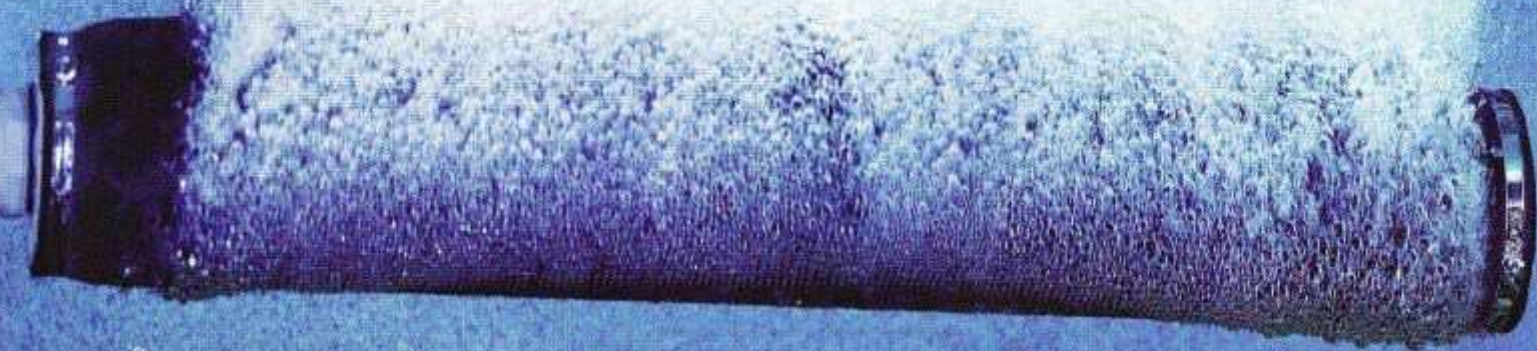
Aeration Tube Series Product

細微氣泡超凡的傳氧效果滿足所有的需求

自清效果 · 防止逆流 · 無浮力 · 抗氧化

The fine bubbles' extraordinary oxygen transfer effect can satisfy all demands.

Self-cleaning effect; backflow preventing; without buoyancy; anti-oxidation.





型號 Model	尺寸 Size	曝氣膜 Aeration membrane	本體結構 Structure	風量(l/min) Amount of wind
TUBE-65-300	12"x2.5"x3/4"NPT	EPDM或VITON	PVC或ABS	10~80
TUBE-65-600	24"x2.5"x3/4"NPT			30~250
TUBE-65-1000	39"x2.5"x3/4"NPT			50~320
TUBE-95-300	12"x 3" x3/4"NPT			30~250
TUBE-95-600	24"x 3" x3/4"NPT			50~250
TUBE-95-1000	39"x 3" x3/4"NPT			50~320

結構

1. 使用EPDM或VITON橡膠合成膜
2. 利用中空設計消除浮力
3. PVC或ABS成型的空氣入口
4. PVC或ABS管的支撐結構
5. 本體與曝氣膜採不鏽鋼夾具#304固定
6. 曝氣膜氣孔彩倒V或I字型開縫

應用範圍

1. 都市廢水處理
2. 工業廢水處理
3. 清淨水處理
4. 穩定淤渣
5. 廢水臭氣擴散
6. 魚池曝氣
7. 河川和湖泊曝氣

優點

1. 高效率傳遞氧氣
2. 有效防止阻塞，具自動清除功能
3. 有效防止腐蝕
4. 廣大的空氣流量範圍
5. 壓力損失低
6. 低能量成本
7. 容易安裝
8. 防止逆流
9. 間歇操作能力強
10. 消除浮力
11. EPDM曝氣膜韌性強

Structure

1. EPDM or VITON rubber synthetic film is used.
2. The hollow design is utilized to eliminate the buoyancy.
3. Air intake of PVC or ABS forming.
4. Support structure of PVC or ABS tube.
5. The stainless steel clamping apparatus #304 is adopted to fix the main body and the aeration membrane.
6. The aeration membrane pores adopt reverse V or I shape slitting.

Scope of Application

1. Urban wastewater treatment.
2. Industrial wastewater treatment.
3. Clean water treatment.
4. To stabilize the sludge.
5. Ozone diffusion in the wastewater.
6. Fishpond aeration.
7. River and lake aeration.

Advantages

1. High efficient oxygen transfer.
2. Effectively preventing blocking; with automatic cleaning function.
3. Effectively preventing corrosion.
4. Extensive airflow scope.
5. Low loss of pressure.
6. Low energy cost.
7. Easy to install.
8. Preventing backflow.
9. Strong intermittent operation capability.
10. Eliminating the buoyancy.
11. Strong tenacity of EPDM aeration membrane.



高效率雙向曝氣盤 High-Efficiency Double-way Aeration Disc

高耐蝕性，壓力損失少，逆流時可完全關閉
High corrosion resistance, low pressure loss, and completely shut when backflow occurs.



High-Efficiency Double-way Aeration Disc

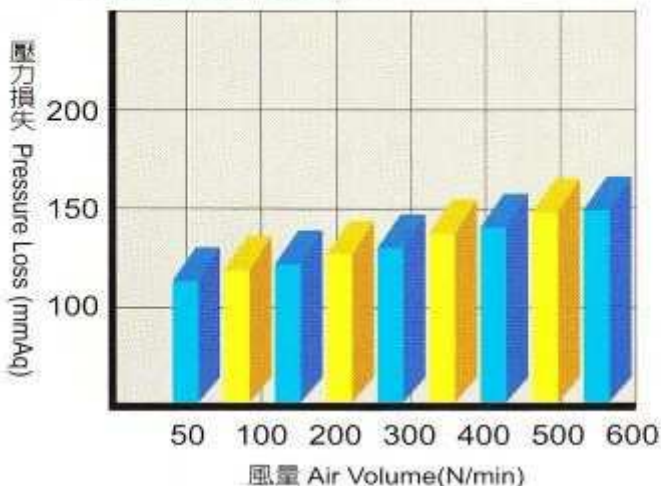


● 產品規格 Specifications

尺寸 Size		直徑 150mm x H90mm Diameter 150mm x H90mm
標準通風量 Standard Air Volume		50L/min~600L/min
安裝方式 Installation		向下或向上皆可 Downwards or Upwards
安裝接合法 Installation Method		PT 1B
		PT 1/4
材質 Material	本體部 Body	ABS
	逆止球閥 Check-ball Valve	NBR

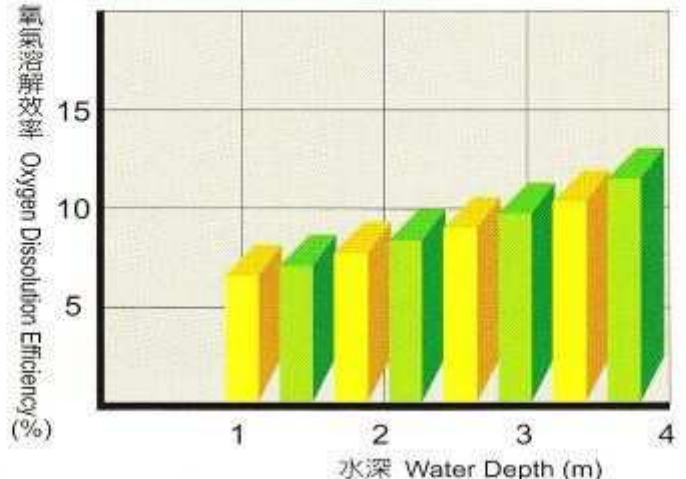
● 風量與壓力損失的關係

Relation Between Pressure Loss & Air Volume



● 水深與氧氣溶解效率

Water Depth & Oxygen Dissolution Efficiency



高耐蝕性，壓力損失少，逆流時可完全關閉

High corrosion resistance, low pressure loss, and completely shut when backflow occurs.

- 利用球型逆止裝置設於出風口上，當鼓風機出風壓力低於100mmAq時，球型逆止則自動閉合，防止污水逆流。
- 特優良的耐蝕性，採用高品質ABS複合材質，其耐溫性、軟化溫度點，非一般泛用之ABS塑材可比較。
- 閥門體採用高級合成樹脂、耐候性、耐蝕性、包括老化、低變形性之特點，其使用期效約3倍於一般橡膠類或PVC類之產品。
- 閥本體因具有伸縮性，應通風量之增減，使噴氣口順應調整，故壓力損失少，其變化異常亦少。

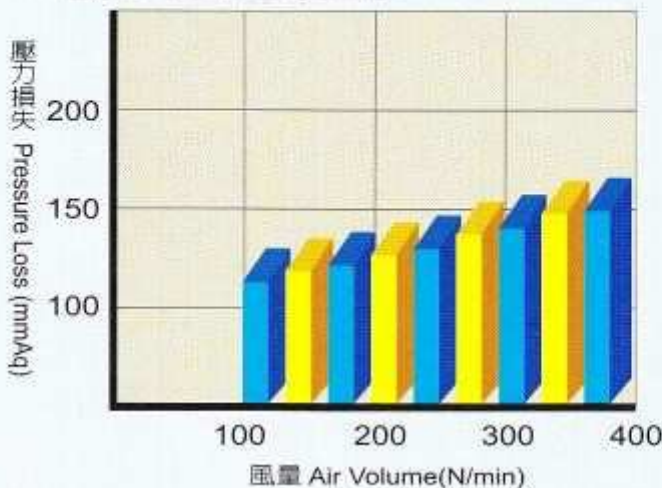
- When the air pressure is lower than 100 mmAq, the check-ball valve installed in the air outlet will be closed automatically to prevent wastewater from flowing back.
- Excellent corrosion resistance. Made of high-quality compound material of ABS whose temperature resistance and softening temperature are much better than those of ordinary ABS material.
- The valve gate is made of synthetic resin, with features such as weather resistance, corrosion resistance and low deformability. Three times durable than those made of rubber or PVC.
- The body of the valve can be adjusted with the air volume. Therefore, the pressure loss is low and variances are few.



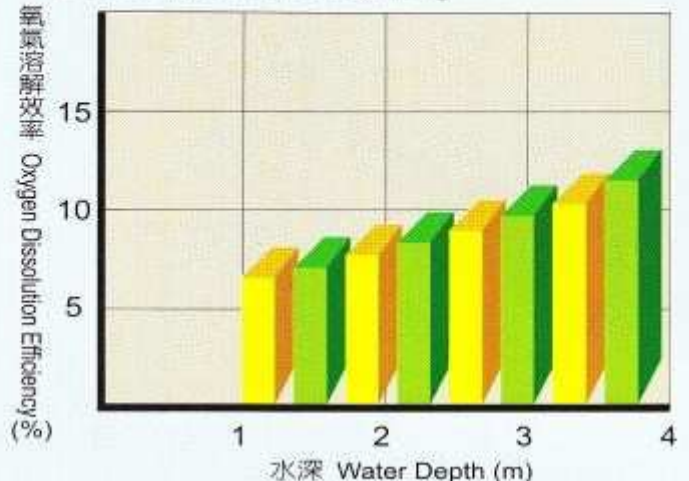
● 產品規格 Specifications

尺寸 Size	直徑 145mm x H70mm Diameter 145mm x H70mm	
標準通風量 Standard Air Volume	100 ^L /min~450 ^L /min	
安裝方式 Installation	向下或向上皆可 Downwards or Upwards	
安裝接合法 Installation Method	PT 1B 螺牙	
	PT 1/4 螺牙	
材質 Material	本體部 Body	ABS 樹脂
	瓣部 Valves	NBR 熱可塑型樹脂

● 風量與壓力損失的關係 Relation Between Pressure Loss & Air Volume



● 水深與氧氣溶解效率 Water Depth & Oxygen Dissolution Efficiency



高耐蝕性，壓力損失少，逆流時可完全關閉

High corrosion resistance, low pressure loss, and completely shut when backflow occurs.

- 利用水壓與閥材之特殊構造，當散氣終止時，其特殊結構可防止污水逆流產生。
- 特優良的耐蝕性，採用高品質ABS複合材質，其耐溫性、軟化溫度點，非一般泛用之ABS塑材可比較。
- 閥門體採用高級合成樹脂、耐候性、耐蝕性、包括老化、低變形性之特點，其使用期效約3倍於一般橡膠類或PVC類之產品。
- 閥本體因具有伸縮性，應通風量之增減，使噴氣口順應調整，故壓力損失少，其變化異常亦少。

- When termination of gas, the special structure to prevent sewage reflux, within water pressure and valve material.
- Excellent corrosion resistance. Made of high-quality compound material of ABS whose temperature resistance and softening temperature are much better than those of ordinary ABS material.
- The valve gate is made of synthetic resin, with features such as weather resistance, corrosion resistance and low deformability. Three times durable than those made of rubber or PVC.
- The body of the valve can be adjusted with the air volume. Therefore, the pressure loss is low and variances are few.

規格 Specifications

- 4/8"牙口，3/8"入氣口
- 直徑：80mm
- 高度：40mm
- 通氣量：0.08~0.10m³/min

- 4/8" Thread, 3/8" Air intake
- Diameter: 80mm
- Height: 40mm
- Air Volume: 0.08~0.10m³/min

特點 Feature

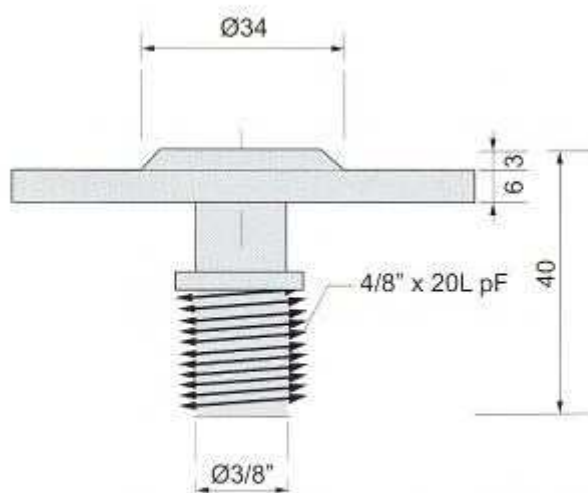
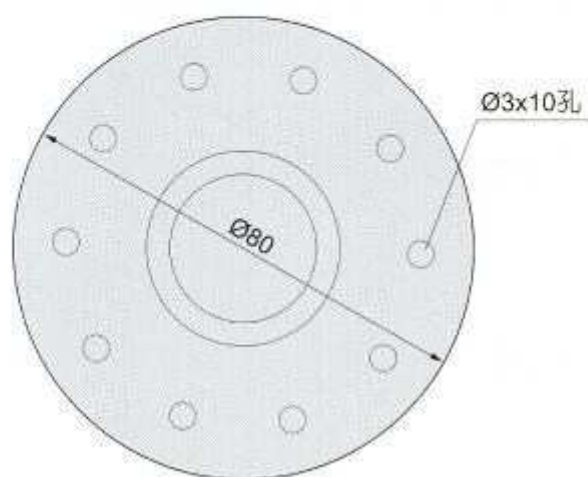
- 配合國內現成4/8"龍頭，安裝容易
- 構造堅固耐用
- 溶氧效率高，耐腐蝕性
- 有逆止作用，永不阻塞

- Easy to installed within the 4/8" faucet existing
- Rugged construction
- High oxygen efficiency with high corrosion resistance
- Having check device, never to be blocked

構造材質 Material

- 擴散蓋：Neporence Rubber耐酸鹼
- 擴散基座：ABS

- Scatter cover: Neporene rubber acid and alkaline proof
- Scatter base: ABS





散氣盤、管、鞍座 Aerator Adapter

本體部採用高級強化塑鋼一體成型設計、機械強度超高、使用壽命長。

The body part of DK series is made of fiber reinforced plastic as a monocoque structure. It is durable and with strong mechanical strength.



散氣盤、管、鞍座 Aerator Adapter

結構 Structure

DK系列產品的本體部採用高級強化塑膠一體成型設計，機械強度超高、使用壽命長。

The body part of DK series is made of fiber reinforced plastic as a monocoque structure. It is durable and with strong mechanical strength.

密封圈 Seal Ring

管壁接觸面採用5.5環形止洩帶NEWPLAN有效制止曝氣管線中的空氣側漏。

A 5.5 pipe seal ring NEWPLAN is attached to the contact surface of the pipe, effectively stopping air leaks in the aeration pipe.

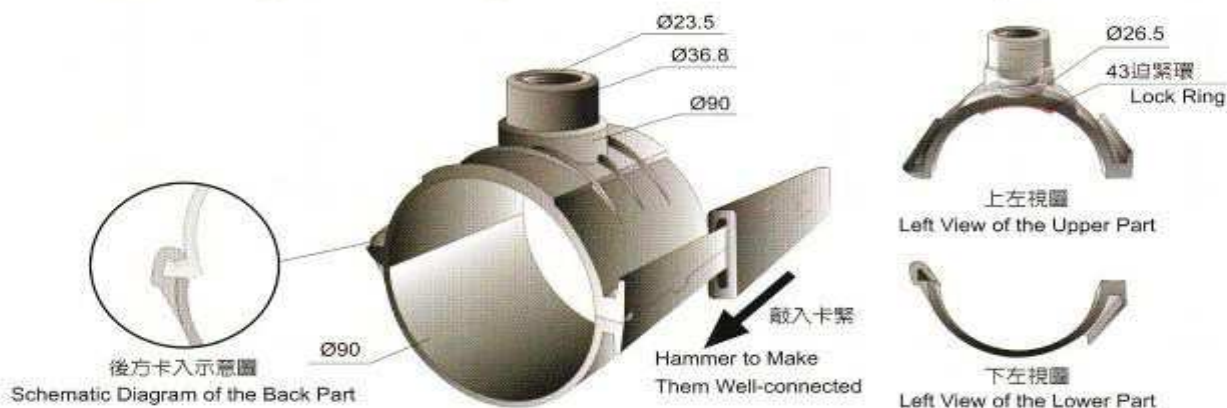


優點 Advantage

- 機械强度高不易斷裂
- 節省施工成本
- High mechanical strength, not easy to fracture.
- Acid and alkaline proof.
- 安裝容易
- 耐酸鹼
- Saving installation costs.
- Wedge-shaped lock ring.
- 鍍型迫緊
- 適用性高
- Easy installation.
- High applicability.

單母牙散氣盤鞍座結構示意圖

Schematic Diagram of Single Screw Nut Aerator Adapter



規格表 Specifications

單位unit: mm

型號 Model No.	尺寸 Size	安裝牙口 Screw Nut	材質 Material
DK-2-01	Ø61mm X 4mm	3/4"NPT	尼龍+纖維 Nylon + Fiber
DK-3-01	Ø91mm X 4mm	3/4"NPT	尼龍+纖維 Nylon + Fiber
TU-3-01	Ø91mm X 6mm	3/4"PT	尼龍+纖維 Nylon + Fiber
TU-3-02	Ø91mm X 6mm	3/4"PT	尼龍+纖維 Nylon + Fiber

10



銓泰工業有限公司

台灣基隆市 203 中山區中平街 164-1 號 2 樓

網址: www.cyuantai.com

電話: +886-2-24291528

傳真: +886-2-24226054

Email: cyuantai2008@gmail.com